



## SHETTY INSTITUTE OF TECHNOLOGY, KALABURAGI

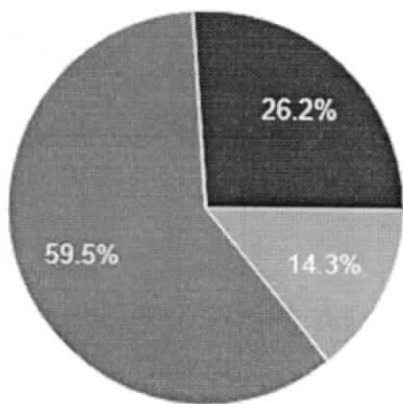
### Internal Quality Assurance Cell Feedback Analysis for Employee – 2018-19 (Feedback on Curriculum)

5-Excellent, 4- Very Good, 3- Good, 2- Average, 1- Poor

Qno	Statements	Excellent	Very Good	Good	Average	Poor
1	Curriculum is contributing for employability	19	04	01	-	-
2	Curriculum is effective to think innovatively	14	09	01		-
3	Curriculum encourages graduates to adopt to Changing Scenario	13	11	-	-	-
4	Ability to contribute to growth of the organization Innovativeness, Creativity and Leadership qualities	19	02	02	01	-
5	Problem solving ability of the candidate	17	05	01	01-	-

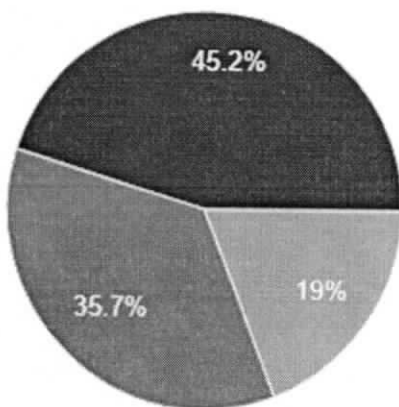
  
PRINCIPAL  
Shetty Institute of Technology  
KALABURAGI

Curriculum is contributing for employability



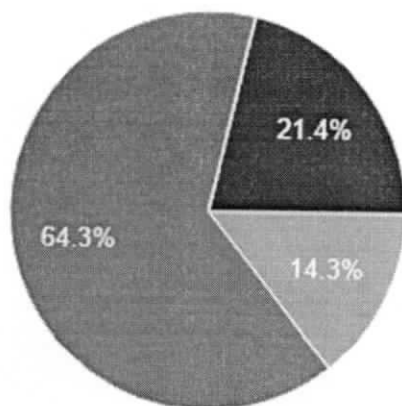
- 1
- 2
- 3
- 4
- 5

Curriculum is effective to think innovatively



- 1
- 2
- 3
- 4
- 5

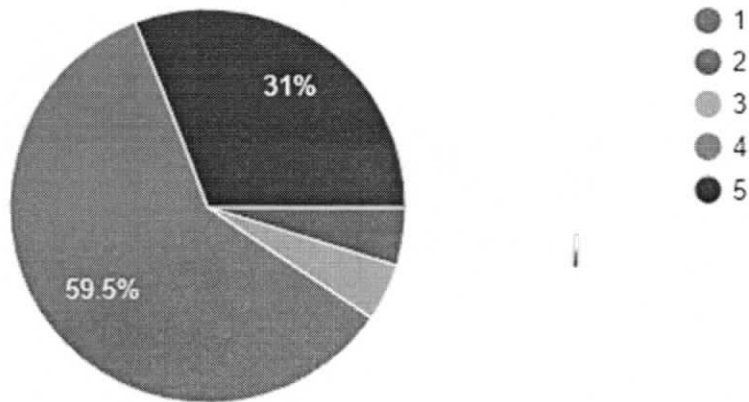
Curriculum encourages graduates to adopt to Changing Scenario



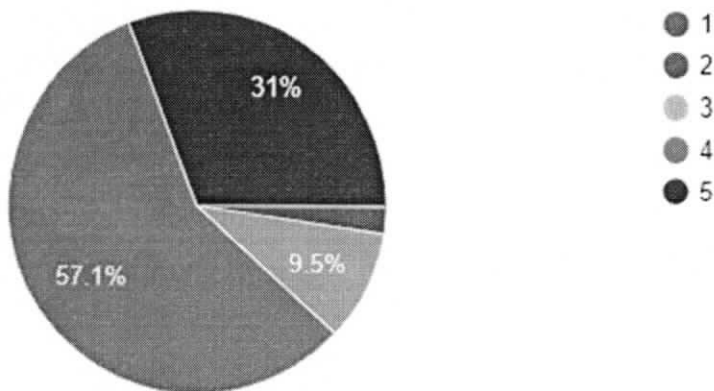
- 1
- 2
- 3
- 4
- 5

**PRINCIPAL**  
Shetty Institute of Technology  
KALABURAGI

### Problem solving ability of the candidate



### Ability to contribute to growth of the organization Innovativeness, Creativity and Leadership qualities



### Summary

Based on the feedback collected, the curriculum at Shetty Institute of Technology is highly effective in contributing to students' employability and innovative thinking. It is seen as particularly successful in encouraging adaptability to changing scenarios and fostering innovativeness, creativity, and leadership qualities for organizational growth. Additionally, respondents have noted that the curriculum significantly enhances problem-solving abilities. Overall, the curriculum receives positive feedback for preparing students for the workforce and equipping them with essential skills for professional success.

  
PRINCIPAL  
Shetty Institute of Technology  
KALABURAGI



**SHETTY INSTITUTE OF TECHNOLOGY, KALABURAGI**

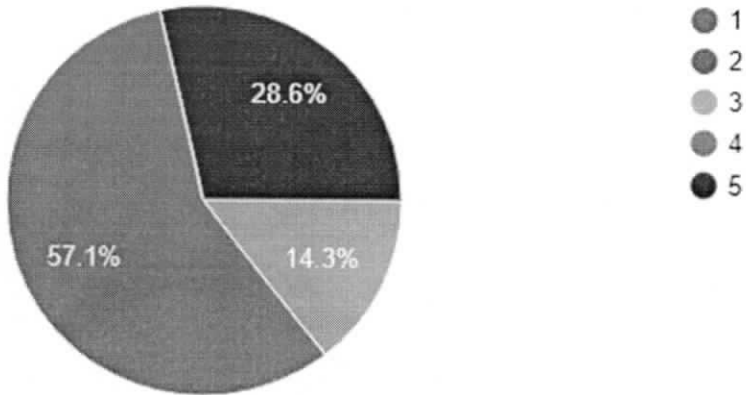
**Internal Quality Assurance Cell  
Feedback Analysis for Employee – 2019-20  
(Feedback on Curriculum)**

**5-Excellent, 4- Very Good, 3- Good, 2- Average, 1- Poor**

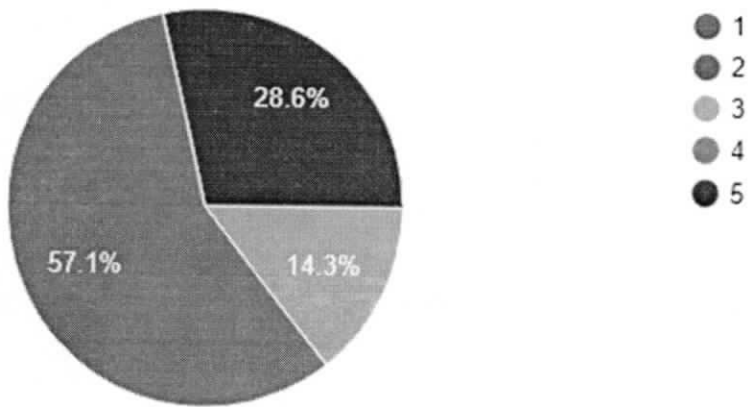
Qno	Statements	Excellent	Very Good	Good	Average	Poor
1	Curriculum is contributing for employability	15	04	01	-	-
2	Curriculum is effective to think innovatively	10	09	01		-
3	Curriculum encourages graduates to adopt to Changing Scenario	13	4	03	-	-
4	Ability to contribute to growth of the organization Innovativeness, Creativity and Leadership qualities	18	01	01		-
5	Problem solving ability of the candidate	17	03	-	-	-

**PRINCIPAL**  
Shetty Institute of Technology  
KALABURAGI

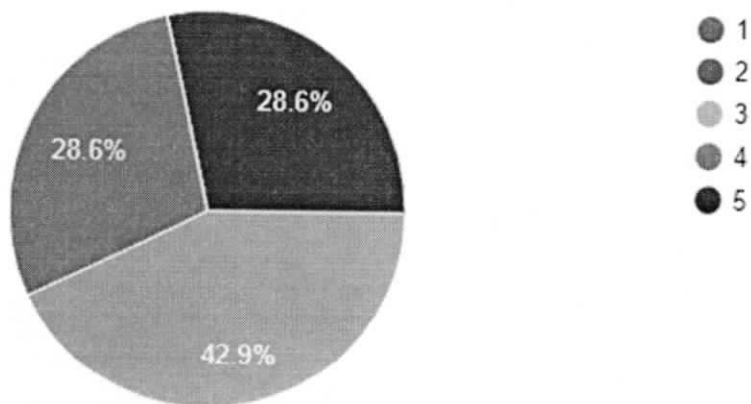
Curriculum is contributing for employability



Curriculum is effective to think innovatively

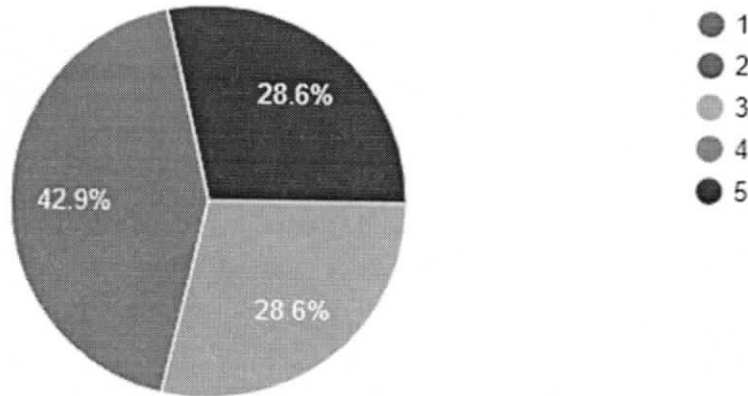


Curriculum encourages graduates to adopt to Changing Scenario

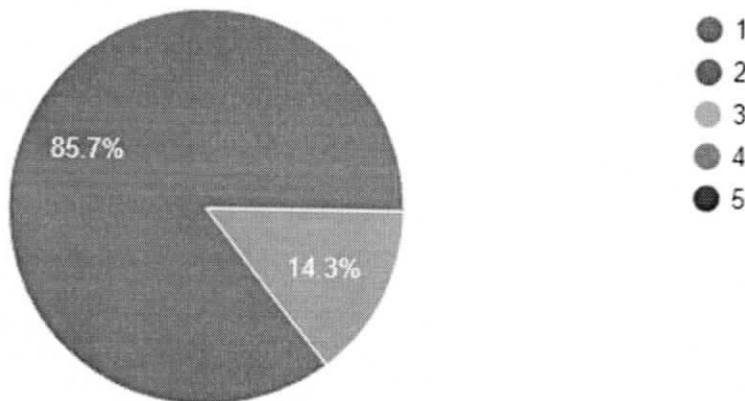


  
PRINCIPAL  
Shetty Institute of Technology  
KALABURAGI

Ability to contribute to growth of the organization Innovativeness, Creativity and Leadership qualities



Problem solving ability of the candidate



### Summary

Based on the feedback collected, the curriculum at Shetty Institute of Technology is highly effective in contributing to students' employability and innovative thinking. It is seen as particularly successful in encouraging adaptability to changing scenarios and fostering innovativeness, creativity, and leadership qualities for organizational growth. Additionally, respondents have noted that the curriculum significantly enhances problem-solving abilities. Overall, the curriculum receives positive feedback for preparing students for the workforce and equipping them with essential skills for professional success.

PRINCIPAL

Shetty Institute of Technology  
KALABURAGI



**SHETTY INSTITUTE OF TECHNOLOGY, KALABURAGI**

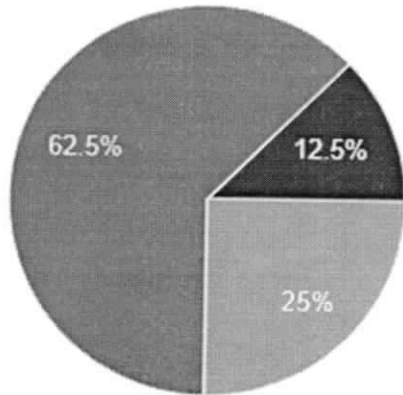
**Internal Quality Assurance Cell  
Feedback Analysis for Employee – 2020-21  
(Feedback on Curriculum)**

**5-Excellent, 4- Very Good, 3- Good, 2- Average, 1- Poor**

Qno	Statements	Excellent	Very Good	Good	Average	Poor
1	Curriculum is contributing for employability	10	04	01	-	-
2	Curriculum is effective to think innovatively	10	04	01		-
3	Curriculum encourages graduates to adopt to Changing Scenario	11	01	03	-	-
4	Ability to contribute to growth of the organization Innovativeness, Creativity and Leadership qualities	13	01	01		-
5	Problem solving ability of the candidate	10	03	02	-	-

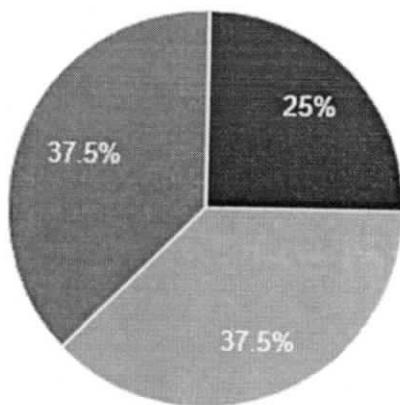
**PRINCIPAL**  
Shetty Institute of Technology  
KALABURAGI

Curriculum is contributing for employability



- 1
- 2
- 3
- 4
- 5

Curriculum is effective to think innovatively

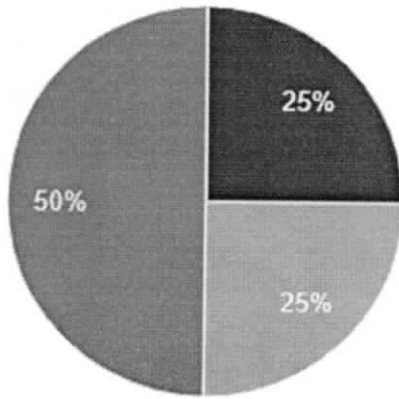


- 1
- 2
- 3
- 4
- 5

Curriculum encourages graduates to adopt to Changing Scenario

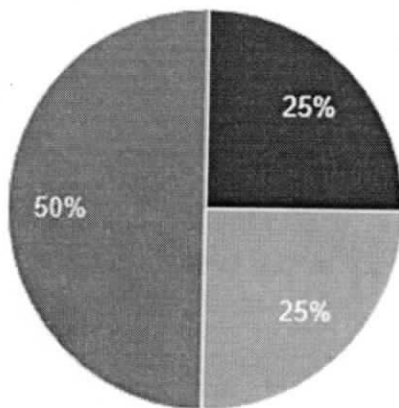
  
PRINCIPAL  
Shetty Institute of Technology  
KALABURAGI





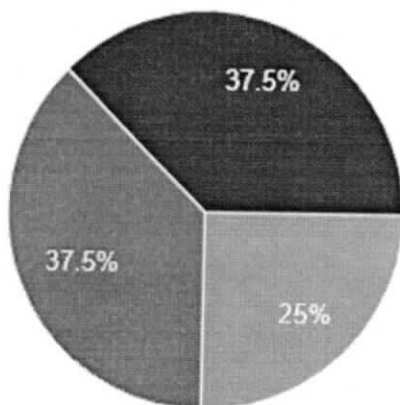
- 1
- 2
- 3
- 4
- 5

Ability to contribute to growth of the organization Innovativeness, Creativity and Leadership qualities



- 1
- 2
- 3
- 4
- 5

Problem solving ability of the candidate



- 1
- 2
- 3
- 4
- 5

*(Handwritten Signature)*

PRINCIPAL  
Shetty Institute of Technology  
KALABURAGI

## Summary

Based on the feedback collected, the curriculum at Shetty Institute of Technology is highly effective in contributing to students' employability and innovative thinking. It is seen as particularly successful in encouraging adaptability to changing scenarios and fostering innovativeness, creativity, and leadership qualities for organizational growth. Additionally, respondents have noted that the curriculum significantly enhances problem-solving abilities. Overall, the curriculum receives positive feedback for preparing students for the workforce and equipping them with essential skills for professional success.



**PRINCIPAL**  
Shetty Institute of Technology  
KALABURAGI

**SHETTY INSTITUTE OF TECHNOLOGY**

(An ISO 9001:2015 Certified Institution)

(Affiliated to Visvesvarya Technological University Belgaum and approved by AICTE, New Delhi)

Shahabad Road, Kalaburagi - 585105, Karnataka-India

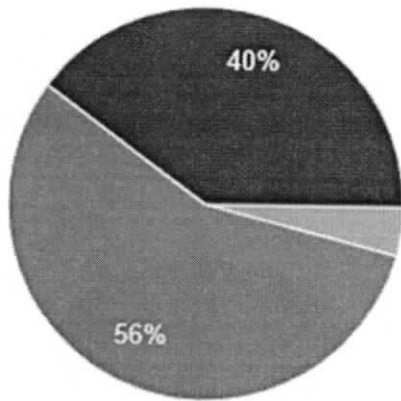
**Internal Quality Assurance Cell  
Feedback Analysis for Employee – 2021-22  
(Feedback on Curriculum)**

**5-Excellent, 4- Very Good, 3- Good, 2- Average, 1- Poor**

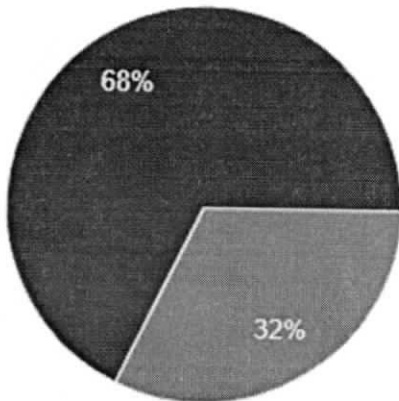
Qno	Statements	Excellent	Very Good	Good	Average	Poor
1	Curriculum is contributing for employability	15	04	01	-	-
2	Curriculum is effective to think innovatively	15	05	00		-
3	Curriculum encourages graduates to adopt to Changing Scenario	12	05	03	-	-
4	Ability to contribute to growth of the organization Innovativeness, Creativity and Leadership qualities	13	04	03		-
5	Problem solving ability of the candidate	10	07	03	-	-

**PRINCIPAL**  
Shetty Institute of Technology  
KALABURAGI

Curriculum is contributing for employability

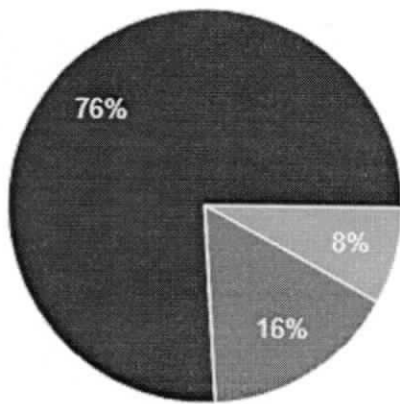


Curriculum is effective to think innovatively

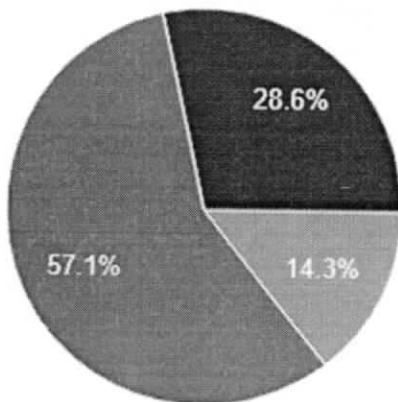


Curriculum encourages graduates to adopt to Changing Scenario

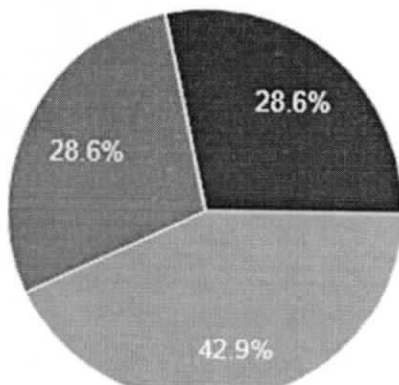
PRINCIPAL  
Shetty Institute of Technolog,  
KALABURAGI



Ability to contribute to growth of the organization Innovativeness, Creativity and Leadership qualities



Problem solving ability of the candidate



PRINCIPAL  
Shetty Institute of Technology  
KALABURAGI

## Summary

Based on the feedback collected, the curriculum at Shetty Institute of Technology is highly effective in contributing to students' employability and innovative thinking. It is seen as particularly successful in encouraging adaptability to changing scenarios and fostering innovativeness, creativity, and leadership qualities for organizational growth. Additionally, respondents have noted that the curriculum significantly enhances problem-solving abilities. Overall, the curriculum receives positive feedback for preparing students for the workforce and equipping them with essential skills for professional success.



PRINCIPAL

Shetty Institute of Technology  
KALABURAGI

**SHETTY INSTITUTE OF TECHNOLOGY**

(An ISO 9001:2015 Certified Institution)

(Affiliated to Visvesvaraya Technological University Belgaum and approved by AICTE, New Delhi)

Shahabad Road, Kalaburagi - 585105, Karnataka-India

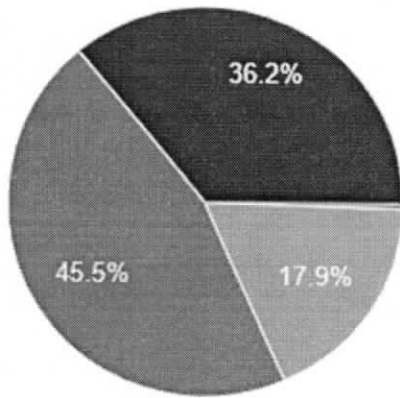
**Internal Quality Assurance Cell  
Feedback Analysis for Employee – 2022-23  
(Feedback on Curriculum)**

5-Excellent, 4- Very Good, 3- Good, 2- Average, 1- Poor

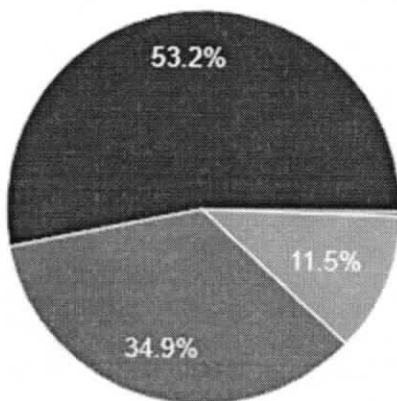
Qno	Statements	Excellent	Very Good	Good	Average	Poor
1	Curriculum is contributing for employability	13	05	02	-	-
2	Curriculum is effective to think innovatively	11	03	03		-
3	Curriculum encourages graduates to adopt to Changing Scenario	12	05	03	-	-
4	Ability to contribute to growth of the organization Innovativeness, Creativity and Leadership qualities	16	03	01		-
5	Problem solving ability of the candidate	17	02	01	-	-

  
PRINCIPAL  
Shetty Institute of Technology  
KALABURAGI

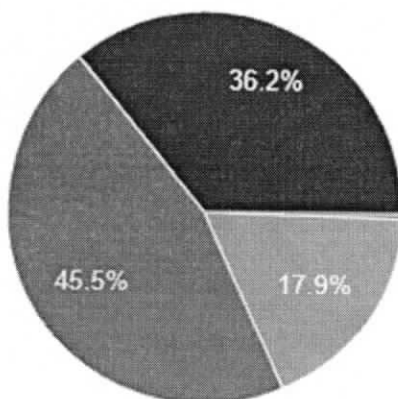
Curriculum is contributing for employability



Curriculum is effective to think innovatively



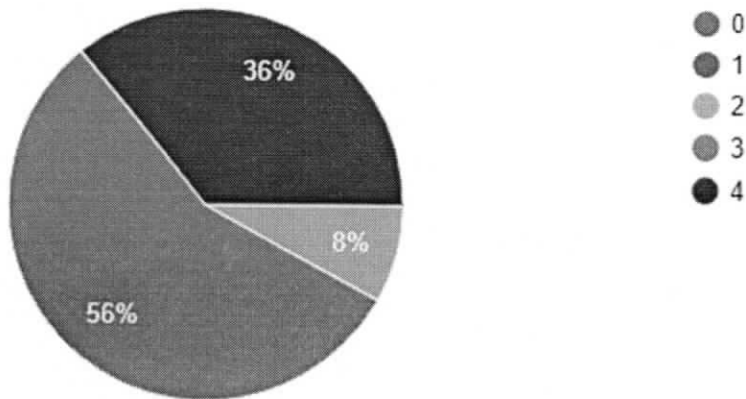
Curriculum encourages graduates to adopt to Changing Scenario



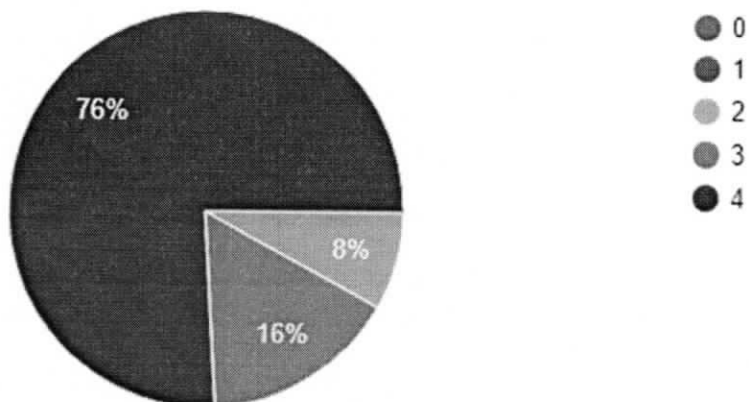
  
PRINCIPAL  
Shetty Institute of Technology  
KALABURAGI



Ability to contribute to growth of the organization Innovativeness, Creativity and Leadership qualities



Problem solving ability of the candidate



### Summary

Based on the feedback collected, the curriculum at Shetty Institute of Technology is highly effective in contributing to students' employability and innovative thinking. It is seen as particularly successful in encouraging adaptability to changing scenarios and fostering innovativeness, creativity, and leadership qualities for organizational growth. Additionally, respondents have noted that the curriculum significantly enhances problem-solving abilities. Overall, the curriculum receives positive feedback for preparing students for the workforce and equipping them with essential skills for professional success.

  
PRINCIPAL  
Shetty Institute of Technology  
KALABURAGI